



## Pet Portal—A New Service Offered to Our Clients

Your pet's own personal online profile is now available for you to set up through a new service we are providing to our clients called Pet Portal. By visiting our website and clicking on the "Pet Portal" icon, you will be directed to your own page where you can view your pet's health information, upload pictures, and check your animal's vaccine status, as well as set up your own reminders to give heartworm and flea preventatives or other medications. You can also request appointments, update your contact information, request refills of your pet's medication, and email any general questions you may have.

In order to get your pet's profile started, you will need to provide us with your email address. Once this address is entered into our system, you will receive a welcome email from Pet Portal with a temporary password that you can change once you are logged in. From then on, you will be able to access your pet's profile at any time.

*Make sure to take advantage of all Pet Portal has to offer. Ask any staff member for details today!*



## Holiday Hazards



The holiday season is in full swing, and with all the festivities we love to partake in, there can be added risks to your pet's wellbeing. Make sure to keep your pet safe and happy during this season by reviewing the following common seasonal dangers.

### Chocolate

*Keep all chocolate goodies out of your pet's reach. Toxicity signs include GI upset, neurological signs such as stumbling, and sometimes death.*

### Poinsettias

Common signs of ingestion or toxicity include mouth irritation, shaking of the head, pawing at the face, vomiting, and excessive salivation.

### Electrical Cords

*Signs of electric shock include severe burns, damage to the lungs, and other symptoms that may not manifest until days after the shock.*

### Mistletoe

Highly toxic, signs of ingestion include excessive salivation, GI upset, increased heart rate and respiration, and increased urination. In severe cases, signs can include shock and sometimes death.

### Holly

Be cautious when using this as decoration—the red berries can cause GI upset and dehydration.

### Escaping

*This is always a risk, but becomes greater with increased traffic in and out of the house.*

### Strings, Ribbons, and Ornaments

Pets can get GI upset and abdominal pain due to blockages or irritation from chewing on tree decorations. Some items can also be choking hazards and can sometimes cause fatal problems.

**Pancreatitis** is a life-threatening condition that results from eating fatty foods, like table food from your holiday dinner. Signs include GI upset, lethargy, and a painful abdomen.

## Signs of a Fearful Pet—Do You Know What to Watch For?

Behavior problems are the number one reason animals are relinquished to shelters across the country. These problems are most often due to miscommunication between pets and humans. Unfortunately, as in the case of many dog bites, this miscommunication may lead to tragedy.

We have all seen or heard of an instance when a beloved and trusted pet suddenly bites a child and everyone is shocked. The parents often say they “never saw it coming”; however, bites like these rarely occur without being preceded by warning signs that were simply overlooked.

One of the most common types of dog bites are what we call “fear bites”. When a dog is fearful, it may show clear signals such as flat or laid-back ears, dilated pupils, a lowered tail, and

exposed teeth. This dog does not want to be approached, and doing so will very likely lead to injury.

Signs of a fearful or agitated dog are not always so clear. A dog that ignores a child or looks at the child and then walks away is indicating that it is uneasy and should be left alone. Another subtle signal of an impending bite is “the freeze”. In this situation, a dog holds very still, usually over a toy or food. This is a guarding posture that may not look threatening to the untrained eye, but can actually lead to an explosive situation. Another commonly misunderstood behavior is when a dog constantly gets in between a baby/child and the parents. Most likely, the dog is not doing this out of affection towards the child, but because it feels the need to protect its resources (the parents) from the child.

It is a common misconception that a wagging tail always means that a dog is happy and friendly. This is NOT true. A surprising fact is that most dogs will wag their tails during an attack. Tail-wagging is a sign of excitement, whether from being happy, nervous, agitated, or fearful.

Cats can also exhibit very subtle warning signs of increasing aggression, including twitching muscles, a lashing tail, and dilated pupils. A cat that acts indifferent or aloof with children should be left alone.

If you are experiencing any behavior problems with your pet, please do not hesitate to discuss them with your veterinarian. There are also many excellent informational resources online. For articles on behavior, please visit:

[www.aspcabehavior.org](http://www.aspcabehavior.org)

## Halloween Costume Contest: And the Winner Is...



The Poodle Pumpkins!

“Chloe” and “Zoe” are owned by the Robinson family and are pictured with their human sister, Bella Grace.

### Some Honorable Mentions



“Bad Patty”



“Caesar” and  
“Xena”



“Rocky”

# The Truth About Treats

It is important to enrich our pets' lives in as many ways as possible, and for many that includes giving our furry friends the occasional treat. However, we need to be careful of how many treats we are giving our animals because many of them are packed with calories. Added daily calories through treats can lead to an unhealthy body condition and even obesity in our pets.

We all know that in order to maintain a pet's healthy weight, their food must be measured out to make sure they are getting the proper amount for their size. Many pet owners, however, do not take treats into account. Often times, people wonder why their pets are still gaining weight on just a small amount of food, but after further questioning, we realize they have been giving five or six treats a day. This amount of treats can often total more daily calories than the food your pet is eating!

If you are used to feeding your dog treats on a schedule, such as every time they go outside or after they do a certain trick, try breaking up the treats and giving pieces at a time instead of giving a whole treat each time. Your dog will not really know the difference; they only know that they are getting that treat!

Another way to decrease the amount of calories your pet is getting through treats is to try low-calorie alternatives. You can look for commercial low-cal treats (still feed with discretion) or try human foods that are healthy for dogs. A great treat that many dogs enjoy is canned green beans - a quarter of a cup contains just 9 calories!

In the case of treats, the term "too much of a good thing" can definitely apply. Make sure to take your dog's treats into account when establishing a healthy feeding routine.

The following chart shows how many calories should be fed in treats per day, both to a dog at an ideal weight and to a dog that is moderately overweight. The suggested caloric amounts are in addition to a properly fed diet.

<u>Weight (lbs)</u> <u>(overweight)</u>	<u>Cal (ideal)</u>	<u>Cal</u>
20	60	40
40	90	55
60	130	70

Here are some examples of the caloric content of many popular commercial brand treats:

<b>Alpo Biscuits</b>	30
<b>Beggin Strips</b>	40
<b>T-Bonz (regular size)</b>	45
<b>T-Bonz (tiny)</b>	19

According to this information, a healthy 20-lb dog should get no more than two of most commercial treats, while an overweight 20-lb dog should ideally get no more than one!

## Fun Facts

### Did you know???

Ever wonder why a male dog urinates with one leg up? Dogs leave their scent for other dogs to smell, which can tell them many things, including the size and health of the dog that has marked its territory. The size of the dog is determined by how high the urine stain is, which is achieved by lifting the leg.

**Name: Stanley**  
**Breed: Boxer**  
**Wt: 63 lbs of pure muscle**  
**You got all that?**



Recent tests show that dogs and cats resemble humans in that they are either right or left-handed, meaning they favor either their right or left paws.



### Sit back and relax...

It has been clinically proven that stroking a cat can lower your blood pressure, a fact that "Mittens" will be more than happy to demonstrate.

*A dog's nose works one million times more efficiently than ours.*

# 30

**The number of muscles in a cat's outer ear**

Unlike the human, which has only 6 outer ear muscles, a cat's ear can rotate 180 degrees, allowing it to hear in all directions without having to move its head.

# Meet Some of Our Perfect Patients!



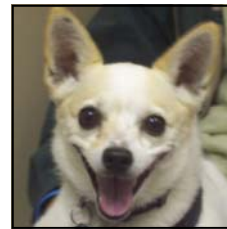
"Zappa"



"Chester"



"Mr. Big"



"Mini Me"



"Jasmine"



"Charlie"



"Tess"



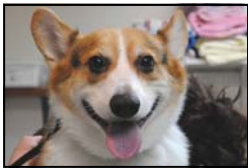
"Chester"



"Dixie"



"Pooogan"



"Humphrey"



"Pumpkin"



"Emma"



"Ripley"



"Sydney"



"Izzy"



"Wes"

## Check Out Some of Our Up and Coming ***YOUNG GUNS!!!***



"Cooper"



"Miss B"



"Venus's" puppies



"Titan"



"Bruiser"



"Chauncey"

"Sealine Dion"



"Paul Newman"



"Penelope"



"Tesla"